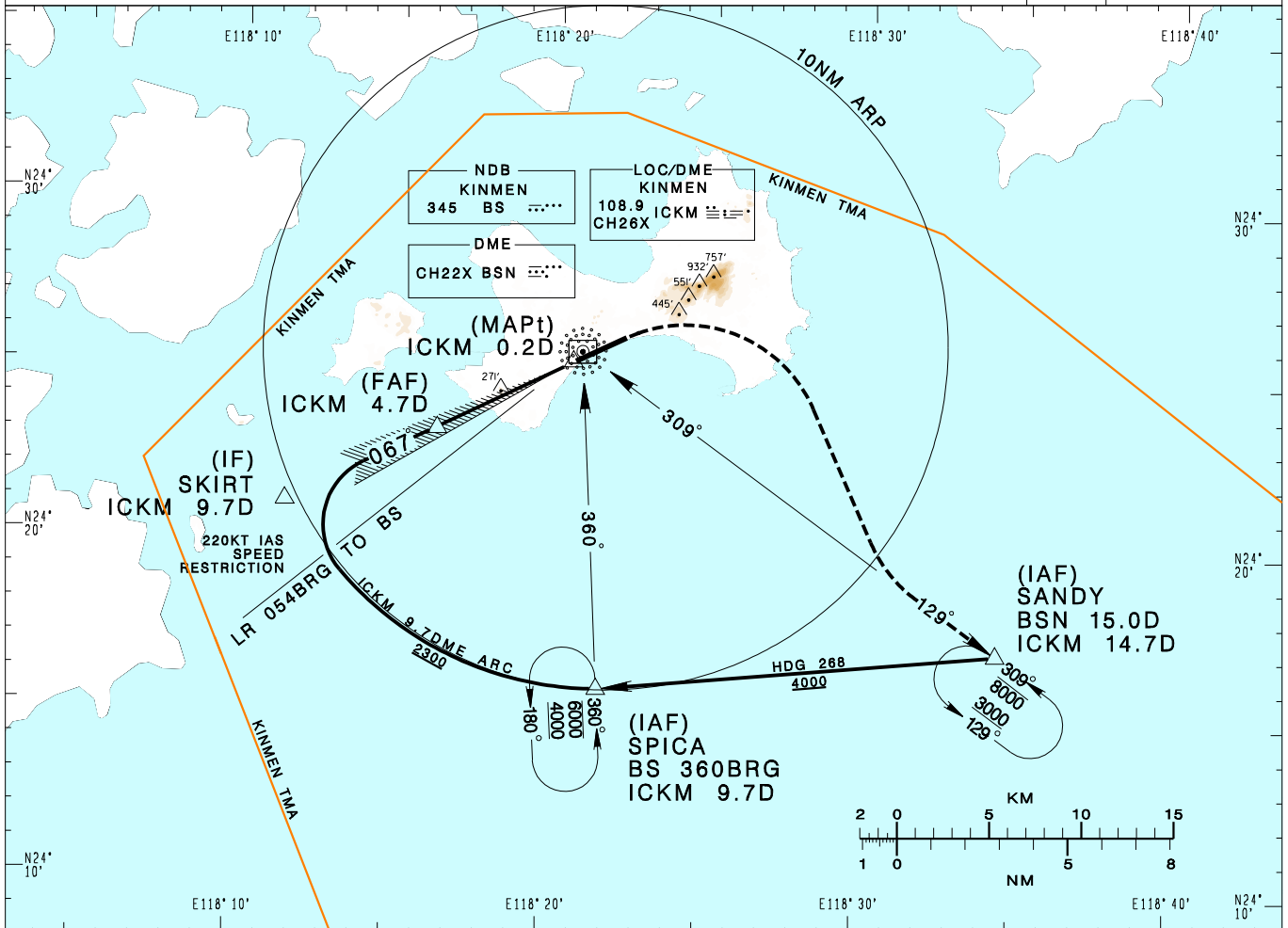


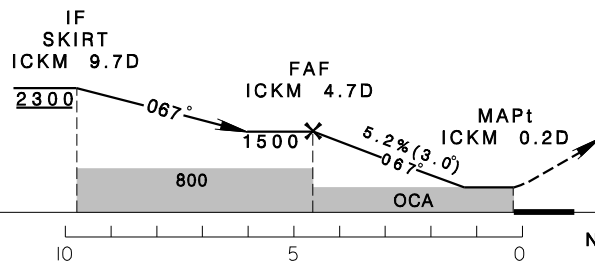
金門/尚義機場
KINMENSHANGYI AD

RCBS
LOC RWY06

KAOSIUNG APP 124.6 133.1	KINMEN TWR 118.0 126.2	ATIS 127.2	VAR 4°W 	 4800'	
Apt Elev: 56'	Rwy06 DTHR Elev: 45'	Trans Level: FL130			Trans Alt: 11,000'
BEARINGS ARE MAGNETIC; DISTANCES ARE NAUTICAL MILES; ELEVATIONS, HEIGHTS IN FEET					



4DME	3DME	2DME	1DME	DIST to ICKM
1310	990	680	360	ADVISORY ALT



MISSED APCH:
CLIMB RIGHT TURN TO TRACK
BS 129BRG TO SANDY,
CLIMB TO 3000 AND HOLD.

MINIMA (OCA IN FT, VIS IN M, OCH IN FT)		A	B	C	D		
CATEGORY							
STRAIGHT IN	MA minima climb gradient 4.5% (274ft/NM)	520/800	475	520/1500 475			
	MA minima climb gradient 2.5% (152ft/NM)	660/800	615	660/2100 615			
STRAIGHT (ALS IN/OUT)	MA minima climb gradient 4.5% (274ft/NM)	520/1600 475		520/2200 475			
	MA minima climb gradient 2.5% (152ft/NM)	660/1800	615	660/1900	615	660/2800 615	
CIRCLING		720/2100	664	980/2800	924	1220/3700 1164	1220/4600 1164

NOTE
1. CIRCLING NORTH OF THE RWY NOT AUTHORIZED.
2. ATIS SURVEILLANCE REQUIRED.
*DME REQUIRED.

CHANGES: NEW PAGE NUMBER